



ALS Canada Ltd.
2103 Dollarton Hwy
North Vancouver BC V7H 0A7
Phone: 604 984 0221 Fax: 604 984 0218 www.alsglobal.com

To: STRATAGOLD CORPORATION
SUITE 584 - 1055 DUNSMUIR STREET
PO BOX 49215
VANCOUVER BC V7X 1K8

Page: 1
Finalized Date: 21-FEB-2012
This copy reported on
20-MAR-2012
Account: STRGOL

CERTIFICATE WH12026837

Project: Eagle Gold

P.O. No.: EGP12-024

This report is for 70 Drill Core samples submitted to our lab in Whitehorse, YT, Canada on 10-FEB-2012.

The following have access to data associated with this certificate:

SUZANNE BYRON
BILL KEATS

AUDREY CHEN

RICHARD ELIASON

SAMPLE PREPARATION

ALS CODE	DESCRIPTION
WEI-21	Received Sample Weight
LOG-24	Pulp Login - Rcd w/o Barcode
LOG-21	Sample logging - ClientBarCode
CRU-36	Fine Crushing - 85% <2mm
CRU-QC	Crushing QC Test
PUL-QC	Pulverizing QC Test
SPL-21	Split sample - riffle splitter
PUL-32	Pulverize 1000g to 85% < 75 um
BAG-01	Bulk Master for Storage
LOG-21d	Sample logging - ClientBarCode Dup
SPL-21d	Split sample - duplicate
PUL-32d	Pulverize Split -Dup 85% <75um

ANALYTICAL PROCEDURES

ALS CODE	DESCRIPTION	INSTRUMENT
Au-AA24	Au 50g FA AA finish	AAS
ME-ICP61	33 element four acid ICP-AES	ICP-AES

To: STRATAGOLD CORPORATION
ATTN: SUZANNE BYRON
SUITE 584 - 1055 DUNSMUIR STREET
PO BOX 49215
VANCOUVER BC V7X 1K8

This is the Final Report and supersedes any preliminary report with this certificate number. Results apply to samples as submitted. All pages of this report have been checked and approved for release.

Signature:


Colin Ramshaw, Vancouver Laboratory Manager



ALS Canada Ltd.
2103 Dollarton Hwy
North Vancouver BC V7H 0A7
Phone: 604 984 0221 Fax: 604 984 0218 www.alsglobal.com

To: STRATAGOLD CORPORATION
SUITE 584 - 1055 DUNSMUIR STREET
PO BOX 49215
VANCOUVER BC V7X 1K8

Page: 2 - A
Total # Pages: 3 (A - C)
Finalized Date: 21-FEB-2012
Account: STRGOL

Project: Eagle Gold

CERTIFICATE OF ANALYSIS WH12026837

Sample Description	Method Analyte Units LOR	WEI-21 Recvd Wt. kg	Au-AA24 Au ppm	ME-ICP61 Ag ppm	ME-ICP61 Al %	ME-ICP61 As ppm	ME-ICP61 Ba ppm	ME-ICP61 Be ppm	ME-ICP61 Bi ppm	ME-ICP61 Ca %	ME-ICP61 Cd ppm	ME-ICP61 Co ppm	ME-ICP61 Cr ppm	ME-ICP61 Cu ppm	ME-ICP61 Fe %	ME-ICP61 Ga ppm
		0.02	0.005	0.5	0.01	5	10	0.5	2	0.01	0.5	1	1	1	0.01	10
M364630		5.55	0.204	0.7	7.61	58	1650	3.3	6	2.27	<0.5	8	32	18	2.49	20
M364631		5.95	0.302	0.5	7.32	49	1470	2.8	8	2.65	<0.5	7	27	17	2.18	20
M364632		4.92	0.126	0.5	7.64	72	1570	3.4	4	2.49	<0.5	8	30	20	2.32	20
M364633		7.12	0.240	0.6	7.37	84	1700	3.0	7	2.50	<0.5	7	29	20	2.28	20
M364634		5.44	0.529	0.6	6.96	68	1470	2.9	21	2.80	<0.5	8	28	20	2.23	20
M364635		5.82	0.865	0.6	7.15	64	1590	3.0	23	2.15	<0.5	8	28	15	2.20	20
M364636		5.46	0.371	0.7	6.80	41	1350	2.7	7	2.97	<0.5	9	54	6	3.07	20
M364637		6.82	0.457	0.7	7.03	23	1400	2.8	10	2.97	<0.5	9	53	11	3.08	20
M364638		6.19	0.496	0.7	7.23	23	1370	2.9	7	2.89	<0.5	9	55	13	2.93	20
M364639		6.75	0.755	0.8	7.30	36	1410	2.9	13	3.15	<0.5	9	62	12	3.15	20
M364640		3.80	0.414	0.7	6.82	28	1240	3.0	6	3.09	<0.5	8	48	13	2.81	20
M364641		6.14	1.580	1.0	6.98	78	1430	3.0	33	2.97	<0.5	9	48	16	2.77	20
M364642		6.91	0.805	0.5	7.50	31	1140	2.9	19	2.74	<0.5	8	41	20	2.83	20
M364643		5.44	0.976	<0.5	7.51	32	790	3.1	18	3.45	<0.5	9	55	13	3.35	20
M364644		6.65	0.464	0.8	7.42	31	1500	2.9	10	3.10	<0.5	9	53	13	3.22	20
M364645		6.23	0.549	<0.5	7.16	54	1610	2.8	20	2.17	<0.5	8	27	15	2.29	20
M364646		5.96	0.322	<0.5	6.75	125	1480	2.9	<2	2.08	<0.5	8	33	26	2.27	20
M364647		5.44	0.213	<0.5	6.82	77	1490	2.9	<2	2.11	<0.5	8	28	14	2.19	20
M364648		5.45	0.522	<0.5	6.82	96	1440	2.8	<2	2.13	<0.5	7	27	12	2.17	20
M364649		6.86	0.235	<0.5	6.59	73	1570	2.9	<2	2.32	<0.5	7	28	15	2.12	20
M364650		0.07	0.976	<0.5	7.35	1595	260	1.0	<2	5.46	<0.5	37	167	58	7.63	20
M364651		7.00	0.070	<0.5	7.24	55	1570	3.2	<2	2.38	<0.5	7	29	11	2.33	20
M364652		5.56	0.380	<0.5	6.92	519	1670	2.6	<2	2.27	<0.5	8	29	16	2.09	20
M364653		5.88	0.489	<0.5	6.87	295	1610	2.7	4	2.19	<0.5	7	29	14	2.10	20
M364654		5.41	1.240	<0.5	6.87	689	1510	2.6	16	2.31	13.4	8	26	36	2.36	20
M364655		5.08	3.02	<0.5	6.99	291	1550	2.5	53	2.10	<0.5	8	26	11	2.17	20
M364656		0.86	<0.005	<0.5	0.10	<5	20	<0.5	<2	20.4	<0.5	1	1	<1	0.44	<10
M364657		6.59	0.251	<0.5	7.05	52	1550	2.9	5	2.42	<0.5	8	30	10	2.30	20
M364658		5.61	0.321	<0.5	7.11	94	1560	2.8	4	2.44	<0.5	7	28	16	2.28	20
M364659		6.20	0.172	<0.5	7.12	79	1480	2.9	3	2.38	<0.5	7	28	13	2.28	20
M364660		5.59	0.452	<0.5	6.98	100	1490	2.9	10	2.24	<0.5	7	25	17	2.28	20
M364661		5.96	0.395	<0.5	6.90	103	1510	2.9	12	2.29	<0.5	8	31	24	2.26	20
M364662		6.29	0.373	<0.5	6.99	90	1520	2.9	10	2.31	<0.5	7	31	25	2.22	20
M364663		5.61	0.575	<0.5	6.84	77	1530	2.8	36	2.54	<0.5	8	28	15	2.26	20
M364664		5.52	0.445	<0.5	7.00	90	1500	3.0	15	2.30	<0.5	8	27	18	2.16	20
M364665		6.20	0.139	<0.5	7.19	206	1520	3.0	6	2.31	<0.5	8	30	20	2.27	20
M364666		6.83	0.425	2.9	7.32	494	880	2.8	6	1.73	2.9	7	26	90	4.54	20
M364667		5.96	0.116	2.5	7.36	139	1170	2.8	5	1.91	1.3	8	28	29	3.06	20
M364668		6.73	0.203	<0.5	7.18	51	1600	2.9	14	2.41	<0.5	8	28	44	2.50	20
M364669		<0.02	0.251	<0.5	7.23	55	1600	2.9	10	2.42	<0.5	8	28	27	2.50	20



ALS Canada Ltd.
 2103 Dollarton Hwy
 North Vancouver BC V7H 0A7
 Phone: 604 984 0221 Fax: 604 984 0218 www.alsglobal.com

To: STRATAGOLD CORPORATION
 SUITE 584 - 1055 DUNSMUIR STREET
 PO BOX 49215
 VANCOUVER BC V7X 1K8

Page: 2 - B
 Total # Pages: 3 (A - C)
 Finalized Date: 21-FEB-2012
 Account: STRGOL

Project: Eagle Gold

CERTIFICATE OF ANALYSIS WH12026837

Sample Description	Method Analyte Units LOR	ME-ICP61 K %	ME-ICP61 La ppm	ME-ICP61 Mg %	ME-ICP61 Mn ppm	ME-ICP61 Mo ppm	ME-ICP61 Na %	ME-ICP61 Ni ppm	ME-ICP61 P ppm	ME-ICP61 Pb ppm	ME-ICP61 S %	ME-ICP61 Sb ppm	ME-ICP61 Sc ppm	ME-ICP61 Sr ppm	ME-ICP61 Th ppm	ME-ICP61 Ti %
		0.01	10	0.01	5	1	0.01	1	10	2	0.01	5	1	1	20	0.01
M364630		3.74	30	0.77	241	1	1.76	18	660	24	0.09	<5	7	503	30	0.31
M364631		3.70	30	0.66	229	1	1.59	17	610	23	0.11	5	6	411	20	0.29
M364632		3.92	30	0.70	256	8	1.73	18	610	31	0.11	<5	6	485	30	0.30
M364633		4.31	30	0.74	239	5	1.61	18	610	25	0.09	<5	7	486	30	0.29
M364634		3.60	30	0.68	233	1	1.54	18	610	16	0.14	5	6	440	20	0.29
M364635		3.95	30	0.74	177	2	1.49	17	610	20	0.11	<5	6	439	20	0.28
M364636		3.31	30	1.25	424	<1	1.66	10	690	26	0.04	<5	9	545	20	0.31
M364637		3.39	30	1.24	405	1	1.75	10	690	26	0.06	<5	9	578	20	0.31
M364638		3.41	30	1.16	384	1	1.74	12	690	24	0.07	<5	9	535	20	0.31
M364639		3.43	30	1.25	378	2	1.64	12	720	22	0.08	<5	10	539	20	0.32
M364640		3.00	30	1.04	335	1	1.56	12	680	20	0.11	<5	8	494	20	0.31
M364641		3.50	30	1.03	343	3	1.62	14	670	22	0.10	<5	8	521	20	0.30
M364642		3.13	40	0.96	288	1	1.55	15	690	27	0.11	6	8	379	20	0.31
M364643		2.88	40	1.14	384	2	1.28	13	760	19	0.11	8	10	338	30	0.32
M364644		3.48	30	1.18	351	2	1.63	14	740	17	0.08	<5	9	538	20	0.33
M364645		3.86	30	0.78	233	3	1.62	21	610	17	0.06	5	6	486	20	0.29
M364646		3.91	30	0.77	217	4	1.46	21	630	16	0.15	5	7	446	20	0.29
M364647		3.86	30	0.73	248	5	1.49	16	590	20	0.11	<5	6	474	20	0.28
M364648		3.67	30	0.71	256	4	1.55	17	570	21	0.08	<5	6	472	20	0.27
M364649		4.00	30	0.68	210	4	1.62	18	610	16	0.10	<5	6	491	20	0.29
M364650		0.62	20	3.83	1235	3	2.11	134	1400	3	0.52	7	18	394	<20	0.95
M364651		3.71	30	0.74	267	3	1.65	17	620	20	0.08	<5	7	499	20	0.30
M364652		4.01	30	0.64	216	6	1.55	20	600	17	0.12	<5	6	467	20	0.27
M364653		3.95	30	0.69	202	7	1.57	17	600	16	0.12	<5	6	479	20	0.28
M364654		3.97	30	0.72	318	6	1.09	19	580	678	0.41	13	6	424	20	0.27
M364655		3.96	30	0.68	297	8	1.33	19	590	54	0.08	5	6	444	20	0.28
M364656		0.05	<10	12.90	207	1	0.01	<1	200	<2	0.01	<5	<1	54	<20	<0.01
M364657		3.79	30	0.74	271	3	1.64	22	630	18	0.07	<5	6	510	20	0.31
M364658		3.86	30	0.74	262	6	1.64	19	630	19	0.11	<5	6	520	20	0.29
M364659		3.81	30	0.71	290	5	1.59	19	590	23	0.09	<5	6	482	20	0.28
M364660		3.68	30	0.73	269	5	1.54	17	610	16	0.12	<5	6	470	20	0.28
M364661		3.93	30	0.69	214	3	1.63	20	590	16	0.18	<5	6	482	20	0.28
M364662		4.02	30	0.68	206	3	1.60	17	600	15	0.18	<5	6	486	20	0.28
M364663		3.86	30	0.69	261	3	1.60	17	610	15	0.10	<5	6	482	20	0.28
M364664		3.96	30	0.65	238	5	1.63	16	580	15	0.11	<5	6	494	20	0.28
M364665		3.93	30	0.69	233	6	1.61	17	620	18	0.15	<5	6	480	20	0.29
M364666		3.40	40	0.74	1235	2	0.53	14	580	319	0.89	20	7	210	20	0.26
M364667		3.68	40	0.59	626	2	0.68	16	610	190	0.31	16	7	234	20	0.28
M364668		3.85	30	0.64	332	3	1.36	19	640	39	0.17	7	6	409	20	0.30
M364669		3.82	30	0.65	345	3	1.31	18	650	40	0.17	9	7	396	20	0.30



ALS Canada Ltd.
 2103 Dollarton Hwy
 North Vancouver BC V7H 0A7
 Phone: 604 984 0221 Fax: 604 984 0218 www.alsglobal.com

To: STRATAGOLD CORPORATION
 SUITE 584 - 1055 DUNSMUIR STREET
 PO BOX 49215
 VANCOUVER BC V7X 1K8

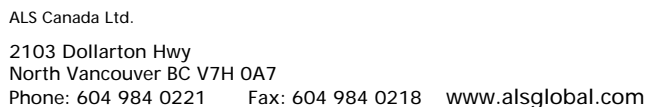
Page: 2 - C
 Total # Pages: 3 (A - C)
 Finalized Date: 21-FEB-2012
 Account: STRGOL

Project: Eagle Gold

CERTIFICATE OF ANALYSIS WH12026837

Sample Description	Method Analyte Units LOR	ME-ICP61 Ti ppm 10	ME-ICP61 U ppm 10	ME-ICP61 V ppm 1	ME-ICP61 W ppm 10	ME-ICP61 Zn ppm 2
M364630		<10	10	37	20	34
M364631		<10	<10	34	40	34
M364632		<10	10	35	10	50
M364633		<10	<10	35	20	38
M364634		<10	<10	34	20	31
M364635		<10	<10	34	10	23
M364636		<10	<10	59	10	55
M364637		<10	<10	60	30	45
M364638		<10	<10	54	10	52
M364639		<10	<10	62	10	48
M364640		<10	10	53	30	36
M364641		<10	<10	52	10	41
M364642		<10	<10	48	30	44
M364643		<10	<10	63	30	52
M364644		<10	<10	60	20	41
M364645		<10	<10	35	20	35
M364646		<10	<10	39	30	33
M364647		<10	<10	34	20	42
M364648		<10	<10	33	30	46
M364649		<10	<10	36	50	28
M364650		<10	<10	146	<10	111
M364651		<10	<10	36	20	41
M364652		<10	<10	33	40	33
M364653		<10	<10	35	70	24
M364654		<10	<10	33	50	2410
M364655		<10	<10	33	60	80
M364656		<10	<10	3	<10	19
M364657		<10	<10	39	20	37
M364658		<10	<10	35	40	33
M364659		<10	<10	34	60	51
M364660		<10	<10	34	20	37
M364661		<10	<10	37	20	23
M364662		<10	<10	33	30	22
M364663		<10	<10	34	20	28
M364664		<10	<10	33	10	27
M364665		<10	<10	35	10	30
M364666		<10	<10	32	20	553
M364667		<10	<10	36	30	259
M364668		<10	<10	36	10	56
M364669		<10	<10	36	20	60

Sample Description	Method Analyte Units LOR	WEI-21	Au-AA24	ME-ICP61	ME-ICP61	ME-ICP61	ME-ICP61	ME-ICP61	ME-ICP61	ME-ICP61	ME-ICP61	ME-ICP61	ME-ICP61	ME-ICP61	ME-ICP61	ME-ICP61
		Recvd Wt.	Au	Ag	Al	As	Ba	Be	Bi	Ca	Cd	Co	Cr	Cu	Fe	Ga
		kg	ppm	ppm	%	ppm	ppm	ppm	ppm	%	ppm	ppm	ppm	ppm	%	ppm
		0.02	0.005	0.5	0.01	5	10	0.5	2	0.01	0.5	1	1	1	0.01	10
M364670		6.13	0.118	<0.5	7.10	55	1600	3.0	4	2.20	<0.5	8	30	26	2.38	20
M364671		5.55	0.276	1.3	7.04	114	1240	2.6	11	1.84	0.5	8	27	32	3.24	20
M364672		5.28	0.161	0.8	7.42	136	1070	2.7	8	0.97	0.7	6	28	24	3.48	20
M364673		7.12	0.024	<0.5	7.16	50	1480	2.8	<2	2.11	<0.5	7	29	17	2.52	20
M364674		5.67	0.150	<0.5	6.26	90	1560	3.0	9	2.07	<0.5	9	27	34	2.39	20
M364675		6.20	0.173	<0.5	7.19	115	1330	2.8	8	1.89	<0.5	8	26	27	2.48	20
M364676		5.74	0.331	4.0	7.34	4260	1050	2.8	12	1.67	3.8	16	27	135	3.99	20
M364677		6.52	0.093	<0.5	7.53	87	1470	3.0	4	1.80	<0.5	8	29	14	2.67	20
M364678		5.75	0.343	<0.5	7.10	72	1480	2.7	15	2.27	<0.5	8	29	23	2.57	20
M364679		5.92	0.287	<0.5	6.98	173	1470	2.9	20	2.22	<0.5	9	28	23	2.52	20
M364680		6.15	0.598	<0.5	7.31	77	1580	2.6	25	2.28	<0.5	8	31	53	3.12	20
M364681		5.97	0.948	3.4	6.67	4310	300	2.6	74	1.80	<0.5	24	22	368	6.27	20
M364682		4.59	1.030	<0.5	6.94	101	1610	2.6	8	2.03	<0.5	9	31	32	2.41	20
M364683		5.16	0.412	<0.5	6.86	127	1630	2.5	54	1.96	<0.5	11	28	39	2.46	20
M364684		4.75	0.507	<0.5	7.04	190	1580	2.5	24	2.37	<0.5	11	30	20	2.65	20
M364685		5.24	0.386	<0.5	7.08	61	1610	2.6	12	2.20	<0.5	10	34	16	2.61	20
M364686		6.01	0.254	<0.5	6.96	42	1520	2.7	14	2.08	<0.5	7	30	24	2.44	20
M364687		6.71	0.093	<0.5	6.41	62	1260	2.7	9	2.43	<0.5	9	26	26	2.34	20
M364688		5.20	0.154	<0.5	7.07	53	1490	2.6	16	1.71	<0.5	8	31	46	3.11	20
M364689		5.70	0.153	0.6	7.18	3020	930	2.3	11	0.68	0.6	8	24	68	3.85	20
M364690		0.07	0.350	0.7	7.32	14	760	1.8	<2	2.32	<0.5	15	47	3330	4.75	20
M364691		5.00	0.238	<0.5	7.10	36	1620	2.9	17	2.31	<0.5	10	30	35	2.52	20
M364692		4.97	0.223	<0.5	7.02	69	1530	2.9	18	2.34	<0.5	9	31	50	2.39	20
M364693		4.06	0.025	<0.5	6.36	45	1070	2.3	4	1.13	<0.5	6	18	17	1.24	20
M364694		7.28	0.028	<0.5	7.08	50	1470	3.1	<2	2.31	<0.5	9	28	35	2.38	20
M364695		6.65	0.864	<0.5	7.15	66	1580	3.1	76	2.34	<0.5	11	33	42	2.40	20
M364696		0.74	<0.005	<0.5	0.09	<5	20	<0.5	<2	20.4	<0.5	1	1	<1	0.43	<10
M364697		6.24	0.742	<0.5	6.70	107	1530	2.7	81	2.00	<0.5	11	28	49	2.25	20
M364698		6.18	0.165	<0.5	6.79	113	1370	2.5	11	2.08	<0.5	9	29	51	2.10	20
M364699		4.43	0.158	<0.5	7.02	187	1660	3.0	8	1.96	<0.5	11	31	46	2.48	20



Page: 3 - B
Total # Pages: 3 (A - C)
Finalized Date: 21-FEB-2012
Account: STRGOL

CERTIFICATE OF ANALYSIS WH12026837

Sample Description	Method Analyte Units LOR	ME-ICP61	ME-ICP61	ME-ICP61	ME-ICP61	ME-ICP61	ME-ICP61	ME-ICP61	ME-ICP61	ME-ICP61	ME-ICP61	ME-ICP61	ME-ICP61	ME-ICP61	ME-ICP61	ME-ICP61
		K	La	Mg	Mn	Mo	Na	Ni	P	Pb	S	Sb	Sc	Sr	Th	Ti
		%	ppm	%	ppm	ppm	%	ppm	ppm	ppm	%	ppm	ppm	ppm	ppm	%
		0.01	10	0.01	5	1	0.01	1	10	2	0.01	5	1	1	20	0.01
M364670		3.81	30	0.72	222	4	1.60	17	630	18	0.17	<5	7	481	20	0.30
M364671		3.50	40	0.64	426	3	0.89	15	570	86	0.55	16	6	320	20	0.26
M364672		3.55	40	0.56	393	4	0.52	17	620	109	0.40	11	7	164	20	0.27
M364673		3.51	30	0.67	322	3	1.50	17	610	26	0.09	<5	7	447	20	0.29
M364674		3.78	30	0.68	223	5	1.55	18	620	15	0.22	7	6	463	<20	0.30
M364675		3.61	30	0.49	365	3	1.09	16	580	30	0.43	12	6	305	20	0.26
M364676		3.59	40	0.55	481	2	0.38	16	610	338	1.46	51	7	186	20	0.26
M364677		3.88	40	0.67	304	2	1.48	17	600	25	0.11	6	7	413	20	0.28
M364678		3.66	30	0.67	293	3	1.59	17	630	28	0.18	5	6	441	20	0.29
M364679		3.73	30	0.71	253	3	1.57	17	600	22	0.18	<5	6	444	20	0.28
M364680		3.63	30	0.82	252	4	1.64	18	660	26	0.49	<5	7	466	20	0.30
M364681		2.59	40	0.62	273	1	0.83	28	550	99	4.29	23	6	226	20	0.21
M364682		3.82	30	0.78	259	2	1.34	17	620	30	0.18	5	6	451	20	0.29
M364683		3.78	30	0.77	225	4	1.39	21	610	25	0.21	5	6	445	20	0.28
M364684		3.44	40	0.79	296	1	1.34	19	650	34	0.20	6	7	442	20	0.30
M364685		3.31	30	0.80	281	2	1.55	20	660	28	0.12	<5	7	478	20	0.30
M364686		3.78	30	0.72	244	2	1.51	16	620	26	0.19	<5	6	443	20	0.27
M364687		3.19	30	0.67	262	1	1.47	17	590	25	0.14	13	6	412	20	0.26
M364688		3.67	30	0.67	269	1	1.36	19	620	33	0.57	15	6	345	20	0.26
M364689		2.97	40	0.56	164	1	1.25	14	610	58	1.11	14	6	147	20	0.20
M364690		3.06	20	1.42	494	253	2.44	19	1040	15	0.47	<5	12	451	<20	0.35
M364691		3.76	30	0.82	274	1	1.63	18	640	28	0.17	5	7	485	20	0.30
M364692		3.71	30	0.75	261	4	1.40	19	630	44	0.32	<5	7	409	20	0.29
M364693		4.91	20	0.34	131	1	1.27	8	290	41	0.13	<5	4	282	20	0.15
M364694		3.63	30	0.76	262	3	1.72	18	610	23	0.18	<5	7	473	20	0.29
M364695		3.87	30	0.81	209	<1	1.73	17	640	22	0.25	<5	7	490	20	0.30
M364696		0.04	<10	12.35	194	<1	0.01	1	220	<2	<0.01	<5	<1	50	<20	<0.01
M364697		4.00	30	0.68	158	1	1.54	16	580	17	0.30	<5	6	434	20	0.26
M364698		3.80	30	0.57	177	9	1.45	17	580	24	0.24	8	6	369	20	0.26
M364699		3.99	30	0.78	171	6	1.53	18	650	16	0.24	<5	7	436	20	0.30



ALS Canada Ltd.
 2103 Dollarton Hwy
 North Vancouver BC V7H 0A7
 Phone: 604 984 0221 Fax: 604 984 0218 www.alsglobal.com

To: STRATAGOLD CORPORATION
 SUITE 584 - 1055 DUNSMUIR STREET
 PO BOX 49215
 VANCOUVER BC V7X 1K8

Page: 3 - C
 Total # Pages: 3 (A - C)
 Finalized Date: 21-FEB-2012
 Account: STRGOL

Project: Eagle Gold

CERTIFICATE OF ANALYSIS WH12026837

Sample Description	Method Analyte Units LOR	ME-ICP61 Ti ppm 10	ME-ICP61 U ppm 10	ME-ICP61 V ppm 1	ME-ICP61 W ppm 10	ME-ICP61 Zn ppm 2
M364670		<10	<10	37	30	34
M364671		<10	<10	32	40	100
M364672		<10	<10	34	30	149
M364673		<10	<10	35	20	71
M364674		<10	<10	37	10	26
M364675		<10	<10	33	20	67
M364676		<10	<10	34	30	697
M364677		<10	<10	35	20	55
M364678		<10	<10	36	20	51
M364679		<10	<10	34	50	37
M364680		<10	<10	38	70	37
M364681		<10	<10	30	30	43
M364682		<10	<10	35	20	40
M364683		<10	<10	34	580	35
M364684		<10	<10	37	20	97
M364685		<10	<10	37	20	56
M364686		<10	<10	34	70	45
M364687		<10	<10	33	30	48
M364688		<10	<10	34	20	44
M364689		<10	<10	31	30	112
M364690		<10	<10	132	10	71
M364691		<10	<10	37	40	49
M364692		<10	<10	37	20	48
M364693		<10	10	17	20	41
M364694		<10	<10	34	10	45
M364695		<10	<10	37	40	26
M364696		<10	<10	3	<10	15
M364697		<10	<10	32	20	17
M364698		<10	<10	33	30	23
M364699		<10	<10	37	10	20